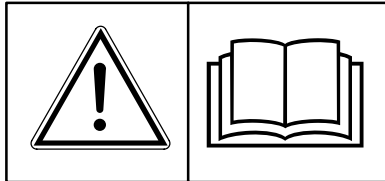
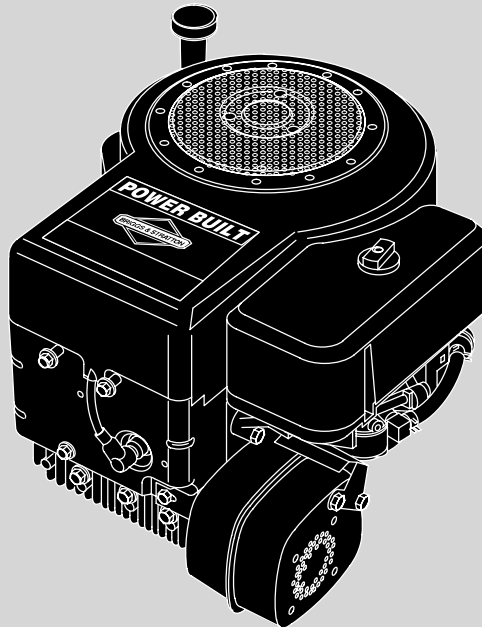


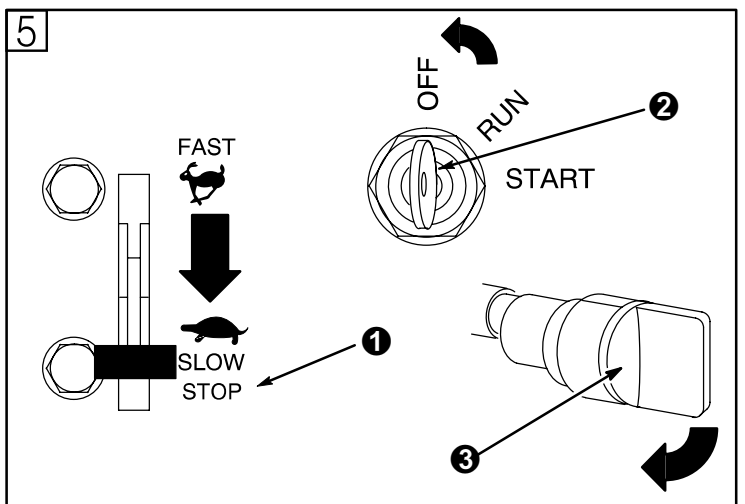
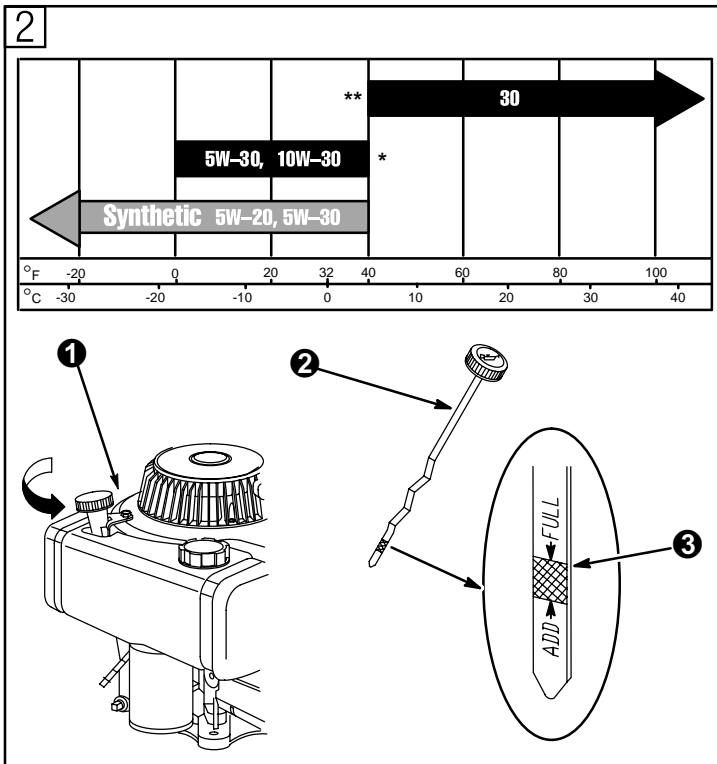
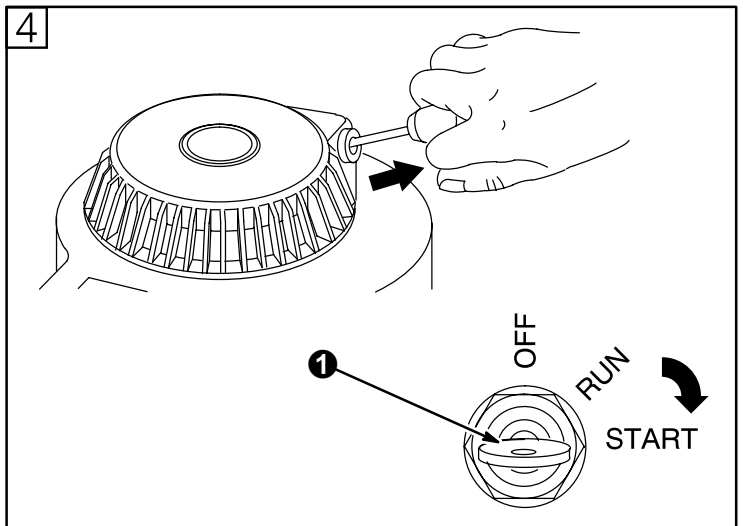
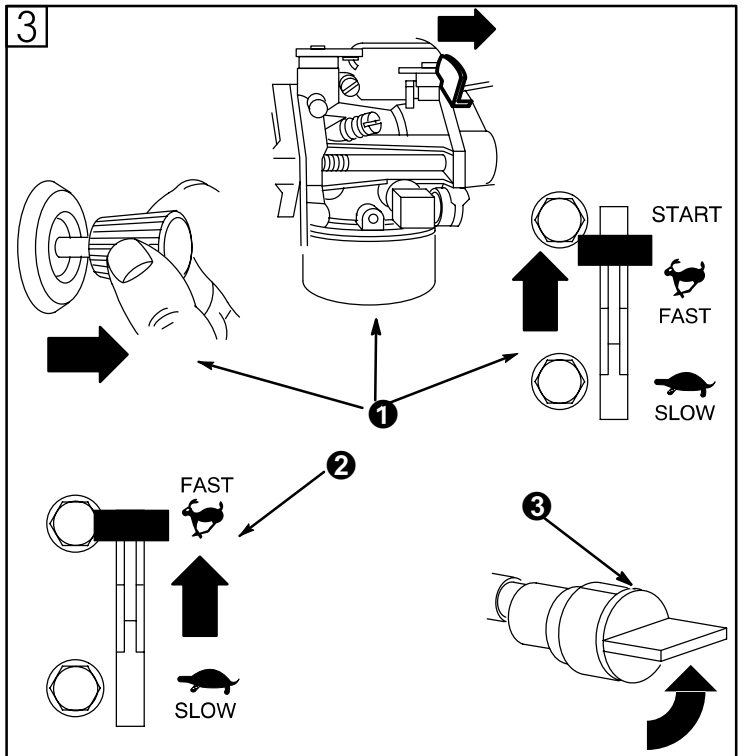
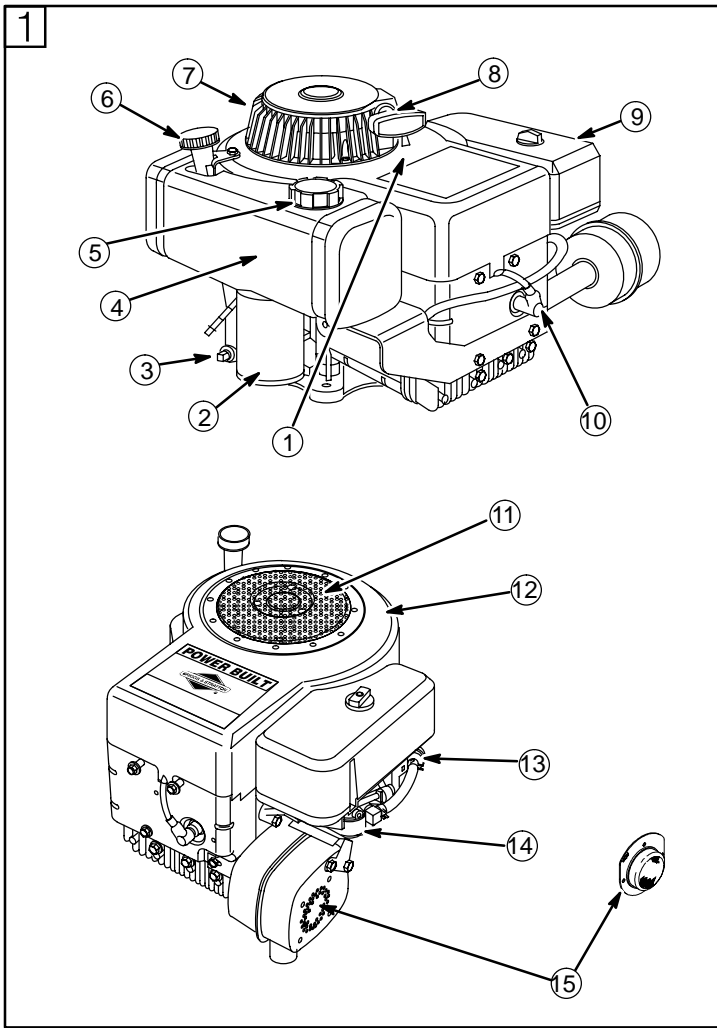


**194700, 195700, 196700, 197700,
28B700, 28D700, 28M700, 28R700, 28T700, 28V700,
283700, 284700, 286700, 288700, 289700**



- (GB) Operator/Owner Manual**
- (CR) Korisnički priručnik**
- (CZ) Příručka majitele a obsluhy**
- (H) Kezelési/Használati utasítás**
- (PL) Instrukcja obsługi operatora/właściciela**
- (RO) Manualul Utilizatorului/Posesorului**
- (RU) Руководство оператора/владельца**
- (SL) Priročnik za operaterja/lastnika**





Note: (This note applies only to engines used in the U.S.A.) Maintenance, replacement or repair of the emission control devices and systems may be performed by any nonroad engine repair establishment or individual. However, to obtain no charge repairs under the terms and provisions of the Briggs & Stratton warranty statement, any service or emission control part repair or replacement must be performed by a factory authorized dealer.



How To Use Manual Figures

1 - 9 refer to figures inside covers.

1 - 15 refer to engine components in figure 1.

1 - 9 refer to part/action in figures.

A - D refer to service parts inside front cover.

Record your engine Model, Type and Code numbers here for future use.

Record your date of purchase here for future use.

Engine Components (see fig. 1)

- | ① | Engine Model
xxxxxx | Type
xxxx xx | Code
xxxxxxxx |
|---|-------------------------------------|-----------------|------------------|
| ② | 12V electric starter, if equipped | | |
| ③ | Drain plug | | |
| ④ | Fuel tank | | |
| ⑤ | Fuel fill | | |
| ⑥ | Oil fill/Dipstick | | |
| ⑦ | Finger guard | | |
| ⑧ | Rope handle | | |
| ⑨ | Air cleaner | | |
| ⑩ | Spark plug | | |
| ⑪ | Rotating screen | | |
| ⑫ | Blower housing | | |
| ⑬ | Fuel filter, if equipped | | |
| ⑭ | Carburetor | | |
| ⑮ | Muffler/Spark arrester, if equipped | | |

Symbols



This safety alert symbol indicates that this message involves personal safety. Words danger, warning and caution indicate degree of hazard. Death, personal injury and/or property damage may occur unless instructions are followed carefully.



You are not ready to operate this engine if you have not read and understood the following safety items. Read this entire owner/operator manual and the operating instructions of the equipment this engine powers.



Remove spark plug wire and ground it (disconnect battery at negative terminal, if engine has electric starting system) when servicing or adjusting engine or equipment.



DO NOT run engine in an enclosed area. (Exhaust gases contain carbon monoxide, an odorless and deadly poison.)



DO NOT remove fuel tank cap nor fill fuel tank while engine is hot or running. DO NOT refuel indoors or in an unventilated area. (Allow engine to cool 2 minutes before refueling.)

Safety Precautions



The Briggs & Stratton engine you bought with your equipment is made of the finest material in a state-of-the-art manufacturing facility. Please understand that Briggs & Stratton sells engines to original equipment manufacturers. It also sells to others in the distribution chain who may sell to the ultimate consumer, an equipment manufacturer, another distributor or a dealer. As a result, Briggs & Stratton does not necessarily know the application on which the engine will be placed. For that reason, you should carefully read and understand the operating instructions of the equipment on which your engine is placed before you operate it.

You should also understand that there are equipment applications for which Briggs & Stratton does not approve the use of its engines. Briggs & Stratton engines are not to be used on vehicles with less than 4 wheels. They include motor bikes, aircraft products and All Terrain Vehicles. Moreover, Briggs & Stratton does not approve of its engines being used in competitive events. **FOR THAT REASON, BRIGGS & STRATTON ENGINES ARE NOT AUTHORIZED FOR ANY OF THESE APPLICATIONS.** Failure to follow this warning could result in death, serious injury (including paralysis) or property damage.

DO NOT run engine in an enclosed area. (Exhaust gases contain carbon monoxide, an odorless and deadly poison.)

DO NOT place hands or feet near moving or rotating parts.

DO NOT store, spill, or use gasoline near an open flame, nor near an appliance like a stove, furnace, or water heater that uses a pilot light or can create a spark.

DO NOT refuel indoors or in an unventilated area.

DO NOT remove fuel tank cap nor fill fuel tank while engine is hot or running. (Allow engine to cool 2 minutes before refueling.)

DO NOT operate engine if gasoline is spilled or when smell of gasoline is present or other explosive conditions exist. (Move equipment away from spill and avoid any ignition until gasoline has evaporated.)

DO NOT transport engine with fuel in tank or with fuel shut-off valve open.

DO NOT tamper with governor springs, links or other parts to increase engine speed. (Run engine at speed set for equipment manufacturer.)

DO NOT check for spark with spark plug removed. (Use an approved tester.)

DO NOT crank engine with spark plug removed. (If engine is flooded, place throttle in FAST and crank until engine starts.)

DO NOT strike flywheel with a hammer or hard object as this may cause flywheel to shatter in operation. (Use correct tools to service engine.)

DO NOT operate engine without a muffler. Inspect periodically and replace if worn or leaking. If engine is equipped with muffler deflector, inspect periodically and, if necessary, replace with correct deflector.)

DO NOT operate engine with an accumulation of grass, leaves or other combustible material under, around or behind muffler/convertor.

DO NOT touch hot muffler, cylinder, or fins which can cause burns.

DO NOT use this engine on any forest covered, brush covered, or grass covered unimproved land unless a spark arrester is installed on muffler. Spark arrester must be maintained in effective working order by owner and/or operator.

DO NOT start engine with air cleaner or air cleaner cover removed.

PREVENT ACCIDENTAL STARTING by removing spark plug wire and grounding it when servicing engine or equipment. Disconnect negative wire from battery terminal if equipped with electric starting system.

KEEP cylinder fins and governor parts free of dirt, grass and other debris which can affect engine speed.

PULL starter cord slowly until resistance is felt. Then pull cord rapidly to avoid kickback and prevent hand or arm injury.

USE fresh gasoline. Stale fuel can gum carburetor and cause leakage.

CHECK fuel lines and fittings frequently for cracks or leaks. Replace if necessary.

Use only Genuine Briggs & Stratton Parts or their equivalent. The use of replacement parts which are not of equivalent quality may damage the engine.

(California, U.S.A. - Proposition 65 warning statement)

WARNING:

The engine exhaust from this product contains chemicals known to the State of California to cause cancer, birth defects, or other reproductive harm.

Oil Recommendations (see fig. [2])

Engine shipped from Briggs & Stratton without oil. Before starting engine, fill with oil. Do not over-fill.

Use a high quality detergent oil classified "For Service SE, SF, SG," such as Briggs & Stratton "warranty certified" SAE 30 oil (see fig. [A]). Use no special additives with recommended oils. Do not mix oil with gasoline.

Choose the SAE viscosity grade of oil from this chart that matches the starting temperature anticipated before the next oil change. (see fig. [2])

- * Air cooled engines run hotter than automotive engines. Using multi-viscosity oils (10W-30, etc.) above 40° F (4° C) will result in high oil consumption and possible engine damage. Check oil level more frequently if using these types of oils.
- ** SAE 30 oil, if used below 40° F (4° C), will result in hard starting and possible engine bore damage due to inadequate lubrication.

Check oil level (see fig. [2])

Oil capacity of Model Series 190000 is about 1.1 liters (36 ounces). Oil capacity of Model Series 280000 is about 1.4 liters (48 ounces).

Place engine level and clean around oil fill ①.

Remove dipstick ②, wipe with clean cloth, insert and tighten down again. Remove dipstick and check oil level. Oil should be at FULL mark ③.

If oil is required, add slowly. Tighten dipstick firmly before starting engine.

Fuel Recommendations

Use clean, fresh, lead-free gasoline with a minimum of 77 octane. Leaded gasoline may be used if it is commercially available and if unleaded is unavailable. Purchase fuel in quantity that can be used within 30 days. See **Storage**.

In U.S.A. leaded gasoline may not be used. Some fuels, called oxygenated or reformulated gasolines, are gasolines blended with alcohols or ethers. Excessive amounts of these blends can damage the fuel system or cause performance problems. If any undesirable operating symptoms occur, use gasoline with a lower percentage of alcohol or ether.

Do not use gasoline which contains Methanol. Do not mix oil with gasoline.

For engine protection, we recommend using Briggs & Stratton Gasoline Additive (see fig. [B]) available from an Authorized Briggs & Stratton Service Dealer.

Check fuel level.

Clean around fuel fill before removing cap to refuel. Allow space in the fuel tank for fuel expansion.



Before refueling, allow engine to cool 2 minutes.

Starting (see figs. [3] [4])



ALWAYS KEEP HANDS AND FEET CLEAR OF MOWER BLADE.



Do not use a pressurized starting fluid. Starting fluid is flammable. Severe engine damage or fire may occur.

Start, store and fuel lawn mower in level position. Start lawn mower on hard surface or over previously cut grass.

Before starting engine (see fig. [3])

5. Move equipment control to CHOKE or START position ①.
Note: If engine does not start, remove air cleaner to check choke. Choke must fully close. If not, see **Adjustments**.
6. If equipment has separate choke and throttle controls, move throttle control to FAST position ②.
7. Open fuel shut-off valve ③ 1/4 turn, if equipped.

Rewind starter (see fig. [4])



Grasp rope handle and pull slowly until resistance is felt. Then pull cord rapidly to overcome compression, prevent kickback and start engine.

Repeat if necessary with throttle control in FAST position. Operate engine in FAST position.

Electric starter (see fig. [4])

On engines equipped with 12 volt starting systems, turn key to START position ①. Repeat if necessary with throttle control in FAST position. When engine starts, operate in FAST position.

Note: If equipment manufacturer has supplied battery, charge it before trying to start engine, as equipment manufacturer recommends.

Note: Use short starting cycles (15 secs. per min.) to prolong starter life. Extended cranking can damage starter motor.

Stopping (see fig. [5])

Do not move choke control to CHOKE to stop engine. Backfire or engine damage may occur. Move throttle control to IDLE or SLOW position, then to STOP ① or turn key to OFF ②, if equipped.

Always remove key from switch when equipment is not in use or left unattended.

When engine or equipment is transported, close fuel shut-off valve ③ 1/4 turn, if equipped, to prevent fuel leakage.

Adjustments (see fig. [6])



To prevent accidental starting, remove spark plug wire ① and ground it and disconnect battery at negative terminal, if engine has electric starting system, before adjusting.

Choke control adjustments

Move choke control to CHOKE or START position. Remove air cleaner to check that choke valve is closed. To assure choke valve is closed, loosen casing clamp screw ② and pull casing and wire ③ in direction of arrow to end of travel. Tighten casing clamp screw.

Throttle control adjustments

With throttle control in FAST position, hole in governor control lever ④ (located just behind governor control plate ⑤) must align with hole ⑥ in governor control plate. If they do not align, loosen casing clamp screw ⑦ and then move governor control rack ⑧ until they do. Tighten casing clamp screw.

Check stop switch

Move throttle control to STOP position, if equipped. Governor control lever ④ must make good contact with stop switch ⑨. Check operation of controls. Readjust if necessary.

Carburetor adjustments



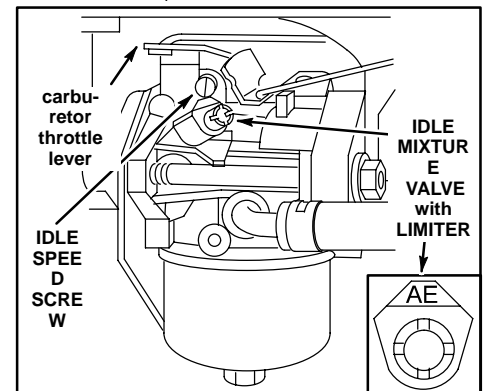
The manufacturer of the equipment on which this engine is installed specifies top speed at which the engine will be operated. DO NOT EXCEED this speed.

See an Authorized Briggs & Stratton Dealer for carburetor adjustment.

In the U.S.A. the carburetor on this engine is low emission. It is equipped with an idle mixture valve with a limiter (see inset), which allows some adjustment, and an idle speed adjustment screw.

Start engine and warm up approximately 5 minutes before adjusting. With engine running, place throttle control in SLOW position. Rotate carburetor throttle lever against the idle speed screw and hold it. Turn idle speed screw to obtain 1750 rpm. Rotate idle mixture valve full travel clockwise and then counterclockwise. DO NOT remove limiter cap. DO NOT force beyond limit. Finally, position idle mixture valve in middle of travel. Check idle speed and re-adjust to 1750 rpm, if necessary.

Move throttle control to FAST position. Engine should accelerate smoothly. If it does not, adjust idle mixture valve counterclockwise 1/8 turn.



Maintenance (see figs. 7 8 9)

Also, see **Maintenance Schedule**. Follow the hourly or calendar intervals, whichever occur first. More frequent service is required when operating in adverse conditions.

See any Authorized Briggs & Stratton Dealer for correct replacement parts (see figs. C D)



To prevent accidental starting, remove spark plug wire ① and ground it and disconnect battery at negative terminal, if engine has electric starting system, before servicing.

Oil service (see fig. 7)

Check oil level regularly.

Be sure correct oil level is maintained. Check every 5 hours or daily, before starting engine. See oil filling procedure, **Oil Recommendations**.

Change oil.

Change oil after first 5 hours of operation. Change oil while engine is warm. Refill with new oil of recommended SAE viscosity grade. (see fig. 2)

Air cleaner service

Replace oil foam® element or pre-cleaner, if equipped, or cartridge if very dirty or damaged.

Air cleaner, oil foam® element (see fig. 8)

1. Lift latch ② on narrow end of cover. Remove cover.
2. Remove oil foam® element ③.

Wash in liquid detergent and water or kerosene. Squeeze dry in a clean cloth. Saturate oil foam® element in engine oil and squeeze in a clean cloth to remove excess oil.

3. Install oil foam® element in body ④. (Install element so lip extends over edge of body to form protective seal when cover is assembled.)
4. Insert tabs in body on to slots ⑤ in cover and press down on cover until latch snaps into place.

Air cleaner, dual element (see fig. 8)

1. Remove knob and cover ⑥.
2. Carefully remove knob, cartridge ⑦ and pre-cleaner ⑧, if equipped, to prevent debris from falling into carburetor.
3. Carefully clean base ⑨.

To service pre-cleaner, wash in liquid detergent and water. Squeeze dry in a clean cloth. Saturate in engine oil. Squeeze in clean, absorbent cloth to remove excess oil.

To service cartridge, clean by tapping gently on a flat surface. Do not use petroleum solvents, e.g., kerosene, which will cause cartridge to deteriorate. Do not use pressurized air, which can damage cartridge. Do not oil cartridge.

4. Reassemble pre-cleaner on cartridge and install assembly firmly in base and tighten knob securely.
5. Replace cover and tighten knob securely.

Maintenance Cont'd

Spark plug service (see fig. 9)

Use only Briggs & Stratton Spark Tester ②, to check for spark. Replace spark plug every 100 hours or every season, whichever occurs first. Spark plug wrench is available from any Authorized Briggs & Stratton Service Dealer.

Note: In some areas, local law requires using a resistor spark plug to suppress ignition signals. If this engine was originally equipped with resistor spark plug, use same type of spark plug for replacement.

Spark plug gap ③ should be .76 mm or 0.030 in.

Keep engine clean (see fig. 9)

Periodically remove grass and chaff build-up from engine. Clean finger guard. Do not spray engine with water to clean because water could contaminate fuel. Clean with a brush or compressed air.



Accumulation of debris around muffler ④ could cause a fire. Inspect and clean before every use.

If muffler is equipped with spark arrester screen ⑤, remove spark arrester screen for cleaning and inspection every 50 hours or every season. Replace if damaged.



Replace in-line fuel filter (see fig. 7). Drain fuel tank or close fuel shut-off valve before replacing fuel filter ⑥.

Clean cooling system. Grass or chaff may clog engine's air cooling system, especially after prolonged service cutting tall, dry grass. Internal cooling fins and surfaces may require cleaning to prevent overheating and engine damage. Remove blower housing to clean areas within heavy line ⑦.

Maintenance Schedule

Follow the hourly or calendar intervals, whichever occur first. More frequent service is required when operating in adverse conditions noted below.

First 5 Hours

- Change oil

Every 5 hours or daily

- Check oil level
- Clean finger guard and around muffler

Every 25 hours or every season

- Change oil if operating under heavy load or high ambient temperature
- Service air cleaner Oil Foam® element or pre-cleaner, if equipped*
- Service air cleaner cartridge if no pre-cleaner*

Every 50 hours or every season

- Change oil
- Clean and inspect spark arrester, if equipped.

Every 100 hours or every season

- Service air cleaner cartridge if equipped with pre-cleaner*
- Replace in-line fuel filter, if equipped.
- Clean cooling system*
- Clean or replace spark plug

* Clean more often under dusty conditions, or when airborne debris is present or after prolonged operation cutting tall, dry grass.

Storage

Engines stored over 30 days need to be protected or drained of fuel to prevent gum from forming in fuel system or on essential carburetor parts.

For engine protection, we recommend use of Briggs & Stratton Gasoline Additive ⑧ available from an Authorized Briggs & Stratton Service Dealer. Mix Additive with fuel in fuel tank or storage container. Run engine for a short time to circulate Additive through carburetor. Engine and fuel can be stored up to 24 months.

Note: If Additive is not used or if engine is operating on gasoline containing alcohol, e.g. gasohol, remove all fuel from tank and run engine until it stops from lack of fuel.

1. Change oil. See **Oil service**. (see figs. 2 7)
2. Remove spark plug and pour about 30 ml (1 oz) of engine oil into cylinder. Replace spark plug and crank slowly to distribute oil.
3. Clean grass and chaff from cylinder and cylinder head fins, under finger guard and behind muffler.
4. Store in a clean and dry area, but NOT near a stove, furnace or water heater which uses a pilot light or any device that can create a spark.

Service

See an Authorized Briggs & Stratton Service Dealer. Each one carries a stock of Genuine Briggs & Stratton Parts and is equipped with special service tools. Trained mechanics assure expert repair service on all Briggs & Stratton engines. Only dealers advertising as "Authorized Briggs & Stratton" are required to meet Briggs & Stratton standards.

When you purchase equipment powered by a Briggs & Stratton engine, you are assured of highly skilled, reliable service at more than 30,000 Authorized Service Dealers worldwide, including more than 2,700 Master Service Technicians. Look for these signs wherever Briggs & Stratton service is offered.



You may locate your nearest Authorized Briggs & Stratton Service Dealer in the "Yellow Pages"™ directory under "Engines, Gasoline" or "Gasoline Engines," or "Lawn Mowers" or similar category. Or log on to our dealer locator map on our web site www.briggsandstratton.com

Note: Walking fingers logo and "Yellow Pages" are registered trademarks in various jurisdictions.

An illustrated shop manual includes "Theories of Operation," common specifications and detailed information covering adjustment, tune-up and repair of Briggs & Stratton L-head, single cylinder, 4 cycle engines. Order P/N 270962 from an Authorized Briggs & Stratton Service Dealer.

Insist on Genuine Briggs & Stratton replacement parts with our logo on the box and/or part. Non-original parts may not perform as well and may void your warranty.

About Your Engine Warranty

Briggs & Stratton welcomes warranty repair and apologizes to you for being inconvenienced. Any Authorized Service Dealer may perform warranty repairs. Most warranty repairs are handled routinely, but sometimes requests for warranty service may not be appropriate. For example, warranty would not apply if engine damage occurred because of misuse, lack of routine maintenance, shipping, handling, warehousing or improper installation. Similarly, warranty is void if the serial number of the engine has been removed or the engine has been altered or modified.

If a customer differs with the decision of the Service Dealer, an investigation will be made to determine whether the warranty applies. Ask the Service Dealer to submit all supporting facts to his Distributor or the Factory for review. If the Distributor or the Factory decides that the claim is justified, the customer will be fully reimbursed for those items that are defective. To avoid misunderstanding which might occur between the customer and the Dealer, listed below are some of the causes of engine failure that the warranty does not cover.

Improper maintenance:

The life of an engine depends upon the conditions under which it operates, and the care it receives. Some applications, such as tillers, pumps and rotary mowers, are very often used in dusty or dirty conditions, which can cause what appears to be premature wear. Such wear, when caused by dirt, dust, spark plug cleaning grit, or other abrasive material that has entered the engine because of improper maintenance, is not covered by warranty.

This warranty covers engine related defective material and/or

workmanship only, and not replacement or refund of the equipment to which the engine may be mounted. Nor does the warranty extend to repairs required because of:

1. PROBLEMS CAUSED BY PARTS THAT ARE NOT ORIGINAL BRIGGS & STRATTON PARTS.
2. Equipment controls or installations that prevent starting, cause unsatisfactory engine performance, or shorten engine life. (Contact equipment manufacturer.)
3. Leaking carburetors, clogged fuel pipes, sticking valves, or other damage, caused by using contaminated or stale fuel. (Use clean, fresh, lead-free gasoline and Briggs & Stratton gasoline stabilizer, Part No. 5041.)
4. Parts which are scored or broken because an engine was operated with insufficient or contaminated lubricating oil, or an incorrect grade of lubricating oil (check oil level daily or after every 8 hours of operation. Refill when necessary and change at recommended intervals.) Read "Owner's Manual."
5. Repair or adjustment of associated parts or assemblies such as clutches, transmissions, remote controls, etc., which are not manufactured by Briggs & Stratton.
6. Damage or wear to parts caused by dirt, which entered the engine because of improper air cleaner maintenance, re-assembly, or use of a non-original air cleaner element or cartridge. (At recommended intervals, clean and re-oil the Oil-Foam® element or the foam pre-cleaner, and replace the

cartridge.) Read "Owner's Manual."

7. Parts damaged by over-speeding, or overheating caused by grass, debris, or dirt, which plugs or clogs the cooling fins, or flywheel area, or damage caused by operating the engine in a confined area without sufficient ventilation. (Clean fins on the cylinder, cylinder head and flywheel at recommended intervals.) Read "Owner's Manual."
8. Engine or equipment parts broken by excessive vibration caused by a loose engine mounting, loose cutter blades, unbalanced blades or loose or unbalanced impellers, improper attachment of equipment to engine crankshaft, over-speeding or other abuse in operation.
9. A bent or broken crankshaft, caused by striking a solid object with the cutter blade of a rotary lawn mower, or excessive v-belt tightness.
10. Routine tune-up or adjustment of the engine.
11. Engine or engine component failure, i.e., combustion chamber, valves, valve seats, valve guides, or burned starter motor windings, caused by the use of alternate fuels such as, liquified petroleum, natural gas, altered gasolines, etc.

Warranty is available only through service dealers which have been authorized by Briggs & Stratton Corporation. your nearest Authorized Service Dealer is listed in the "Yellow Pages"™ of your telephone directory under "Engines, Gasoline" or "Gasoline Engines," "Lawn Mowers," or similar category.

Briggs & Stratton Engine Owner Warranty Policy

Effective July 1, 1998, replaces all undated Warranties and all Warranties dated before July 1, 1998

LIMITED WARRANTY

"Briggs & Stratton Corporation will repair or replace, free of charge, any part, or parts of the engine that are defective in material or workmanship or both. Transportation charges on parts submitted for repair or replacement under this Warranty must be borne by purchaser. This warranty is effective for the time periods and subject to the conditions provided for in this policy. For warranty service contact your nearest Authorized Service Dealer as listed in the "Yellow Pages"™ under "Engines, Gasoline," "Gasoline Engines," "Lawn Mowers" or similar category. THERE IS NO OTHER EXPRESS WARRANTY. IMPLIED WARRANTIES, INCLUDING THOSE OF MERCHANTABILITY AND FITNESS FOR A PARTICULAR PURPOSE ARE LIMITED TO ONE YEAR FROM PURCHASE, OR TO THE EXTENT PERMITTED BY LAW ANY AND ALL IMPLIED WARRANTIES ARE EXCLUDED. LIABILITY FOR CONSEQUENTIAL DAMAGES UNDER ANY AND ALL WARRANTIES ARE EXCLUDED TO THE EXTENT EXCLUSION IS PERMITTED BY LAW. Some states do not allow limitations on how long an implied warranty lasts, and some states do not allow the exclusion or limitation of incidental or consequential damages, so the above limitation and exclusion may not apply to you. This warranty gives you specific legal rights and you may also have other rights which vary from state to state."

Briggs & Stratton Corporation

F. P. Stratton, Jr.
Chairman and Chief Executive Officer

WARRANTY PERIOD

ENGINES	WITHIN U.S.A. AND CANADA		OUTSIDE U.S.A. AND CANADA	
	CONSUMER USE*	COMMERCIAL USE*	CONSUMER USE*	COMMERCIAL USE*
All Vanguard™ engines.	2 year - engine ‡ / Lifetime** - Magnetron® ignition			
All Diamond Plus®, Industrial Plus™, I/C® engines and sleeve bore Intek series.	2 year	1 year	2 year ‡	1 year
Quantum® and Diamond Power®.	2 year	90 days	2 year † ‡	90 days
All standard engines and Kool Bore™ Intek series installed on lawn mowers, riders, edgers, chippers, shredders, tillers, fun carts, and all Sno/Gard engines.	2 year	90 days	1 year	90 days
All other standard engines and Classic™ series.	1 year	90 days	1 year	90 days

* For purposes of this warranty policy, "consumer use" means personal residential household use by the original retail consumer. "Commercial use" means all other uses, including use for commercial, income producing or rental purposes. Once an engine has experienced commercial use, it shall thereafter be considered as a commercial use engine for purposes of this warranty. *Engines used in competitive racing or on commercial or rental tracks are not warranted.*

** Lifetime limited warranty of the Magnetron® ignition covers parts and labor for the first five (5) years from the date of purchase; thereafter only parts. "Lifetime" means lifetime of the engine in the hands of the original purchaser.

† One (1) year in Australia, New Zealand, Middle East and Africa.

‡ One (1) year in India.

NO WARRANTY REGISTRATION CARD IS NECESSARY TO OBTAIN WARRANTY ON BRIGGS & STRATTON ENGINES. YOU MUST SAVE THE PURCHASE RECEIPT. A PROOF OF PURCHASE DATE WILL BE REQUIRED TO OBTAIN WARRANTY.

Briggs & Stratton Engines Are Made Under One Or More Of The Following Patents: Design D-247,177 (Other Patents Pending)										
5,642,701	5,497,679	5,243,878	5,191,864	5,105,331	5,040,644	4,995,357	4,875,448	4,633,556	4,453,507	DES. 309,458
5,606,948	5,320,795	5,235,943	5,188,069	5,086,890	5,040,503	4,977,879	4,819,593	4,630,498	4,430,984	DES. 309,457
5,548,955	5,271,363	5,234,038	5,186,142	5,070,829	5,009,208	4,971,219	4,719,682	4,522,080	4,355,253	DES. 308,872
5,546,901	5,269,713	5,197,425	5,138,996	5,058,544	4,996,956	4,895,119	4,694,792	4,520,288	4,270,509	DES. 308,871
5,503,125	5,265,700	5,197,422								

